

2024 年度
一般入試 I 入学試験問題

英 語(50 分)

(全 10 ページ)

<注意>

1. 試験開始の指示があるまで、この問題冊子・解答用紙を開けてはいけません。
2. 試験開始の指示と同時に、解答用紙に受験番号と氏名を書きなさい。
3. 試験開始後、問題冊子がそろっていない、印刷がはっきりしないなどの不備があったら、手をあげて試験監督に知らせなさい。
4. 解答はすべて解答用紙の指定されたところに書きなさい。
5. リスニングテストが にあります。試験開始後すぐに行います。

1 リスニングテスト (放送による指示に従って答えなさい。)

〔問題 A〕 次のア～エの中から適するものをそれぞれ一つずつ選びなさい。

<対話文1>

- ア On Tuesday.
- イ On Wednesday.
- ウ On Thursday.
- エ On Friday.

<対話文2>

- ア Because he didn't have a map.
- イ Because he couldn't read a map.
- ウ Because he couldn't understand how to change trains.
- エ Because he didn't want to use the Green Line.

<対話文3>

- ア London.
- イ New York.
- ウ Beijing.
- エ Moscow.

〔問題 B〕 <Question 1>では、下のア～エの中から適するものを一つ選びなさい。

<Question 2>では、質問に対する答えを英語で書きなさい。

<Question 1>

- ア As old as she is.
- イ Younger than her sister.
- ウ Older than her sister.
- エ Younger than her classmate.

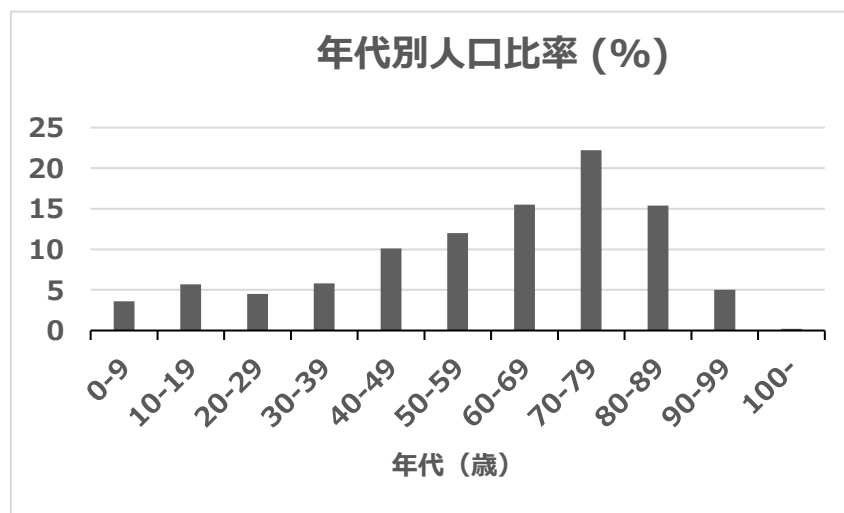
<Question 2>

(15 秒程度、答えを書く時間があります。)

- 2 次の対話の文章を読んで、後の各問に答えよ。
(*印の付いている単語・語句には、本文の後に〔注〕がある。)

Ray is a high school student from Hawaii and studies in Tokyo. He is going to stay in Japan for a year. He has visited many places with his host sisters, Mariko and Ayumi during his stay. Three days ago, they went to a village in western Japan to enjoy its nature.

- Ray:* We've taken many pictures since we came here. There are so many beautiful places in this village.
- Mariko:* The views of the mountains, the *streams, and the rice fields...they are all typical Japanese scenes. I'll recommend this place to my friends at university.
- Ray:* I love the nature here.
- Ayumi:* Yeah, I love this village, too. It took a long time to get here from Tokyo, but it was worth visiting.
- Ray:* By the way, I was wondering about something.
- Ayumi:* What is it?
- Ray:* I noticed there are few people in this village.
- Ayumi:* I was thinking about that, too. I've seen few people, especially young people. So, I checked about this village on my smartphone. According to the information I found, this is a *thinly populated area.
- Mariko:* Many villages around here may be thinly populated. How about the percentage of each age group here?
- Ayumi:* Wait a minute. This is the data. It shows the *population composition of the area.



- Ray:*
- Ayumi:* People in their 70's.
- Mariko:* There is a high percentage of elderly people. On the other hand, the working population seems small.
- Ray:* What problems does (2)it cause?

Mariko: *Industries in the areas *are declining.

Ayumi: What does that mean?

Mariko: Well, the number of young farmers, fishermen, workers in companies and factories is decreasing, and the number of workplaces is decreasing, too. This means that an area's industries become more difficult.

Ray: I heard *depopulation is a big problem all over Japan.

Ayumi: Yeah, that's true. Many Japanese companies often say they need more workers.

Ray: We sometimes see robots working in the restaurants instead of people. They bring the ordered dishes safely and smoothly.

Ayumi: Also, I've seen shops without any workers. The only things inside the shops are *products on the shelves. People pay by credit cards or digital money. The products are *managed without the shop staff working all time.

Ray: I think these ways can solve the problem.

Mariko: Wait! (3)There is another problem with depopulation especially in *rural areas. That is the risk to lose our own culture. It becomes very hard to pass down traditions to the next generation.

Ray: That is a serious problem. What can we do about it?

Ayumi: I saw a TV program the other day. Many people who lived in the big cities have moved to rural areas these days.

Mariko: Some companies moved their *head office buildings to a rural island. Many of the workers moved there with their families. The workers who couldn't move *work remotely. It became possible because the system of working remotely developed.

Ayumi: (4)That sounds good. I want to work at my favorite place in the future.

Ray: Has the population of that island increased?

Mariko: Yes. The people who moved there enjoy communicating with local people and *got used to the lifestyles there. Their children going to a local school teach them many things about the area. They could also get used to the customs there by joining events. Their children may be supporters of the events in the future.

Ray: Rural areas can protect cultures, can't they?

Mariko: Yes, that's right.

Ray: I hope all areas in Japan hold on to their unique and wonderful *characteristics.

[注] stream 小川 thinly populated area 人口密度の低い地域
population composition 人口構成 industry 産業 be declining 衰退している
depopulation 人口減少、過疎 product 製品 manage 管理する
rural 田舎の head office building 本社 work remotely リモートワークをする
get used to ~に慣れる characteristic 特色

[問1] グラフの説明として適切なものは、次のうちではどれか。

- ア It shows the difference between the big city and village in Japan.
- イ It shows the size of each age group who live in villages.
- ウ It shows the percentage of each generation who moved to villages.
- エ It shows that there will be many people living in this village in the future.

[問2] に入る英文として適切なものは、次のうちではどれか。

- ア How can you find the data?
- イ Who made the data?
- ウ What percentage of people are living there?
- エ Which age group is the largest in this village?

[問3] (2)it の内容を最もよく表しているのは、次のうちではどれか。

- ア Elderly people work longer than before.
- イ There isn't anyone who can work in this village.
- ウ Most of the people living in this village are elderly people.
- エ People can work more easily in cities than in villages.

[問4] (3)There is another problem with depopulation especially in rural areas. の内容を最もよく表しているのは、次のうちではどれか。

- ア The reduced number of working people is not the only problem that rural areas have.
- イ Robots can't solve the problems of the restaurants in rural areas.
- ウ People can't use credit cards or digital money in depopulation areas.
- エ All the depopulation problems can be solved by increasing workers in rural areas.

[問5] (4)That の内容を最もよく表しているのは、次のうちではどれか。

- ア Through technology we don't need to have companies in cities.
- イ Children in villages can go to school easily with technology.
- ウ People living in cities can communicate with people in rural areas.
- エ Technology can solve some of the problems caused by depopulation.

[問6] 次の文の空所に入れる語句として適切でないものは、次のうちではどれか。

People who moved to the rural areas can enjoy their life there through .

- ア spending time with local people
- イ learning about it from their children
- ウ having more time with robots
- エ joining in the events held there

[問7] Mariko の発言した内容として適切なものは、次のうちではどれか。

- ア The depopulation influences not only industries but also cultures.
- イ It is important for every village in Japan to keep its nature.
- ウ Thanks to technology, tourists can visit rural areas and have a chance to communicate with local people easily.
- エ People living in depopulated areas can buy things easily by using new technology.

3 Natsumi は日本人の高校生、Sophia は Natsumi のアメリカ人の友人です。Sophia は今度学校で、尊敬する人について発表することになりました。Natsumi はそのことについて Sophia から相談されたので、返事の E メールを送ることになりました。あなたが Natsumi だとしたら、Sophia にどのような返事の E メールを送りますか。

次の<条件>に合うように、下の□の中に三つの英語の文を書きなさい。

<条件>

- 前後の文につながるよう書き、全体としてまとまりのある返事の E メールとすること。
- Sophia に伝えたい内容を一つ取り上げ、それを取り上げた理由などを含めること。

Hello, Sophia,

Thank you for your e-mail. You are going to give a presentation about someone you respect. I'm really interested in what kind of person you will choose.

I will try to answer your question. You asked me, "Who do you respect the most?" I will write about it.

I hope my answer is helpful. Let me know the person you will choose.

I hope your presentation goes well.

Your friend,
Natsumi

4 次の英文を読んで、後の各問に答えよ。

(*印の付いている単語・語句には、本文の後に〔注〕がある。)

Yume was a first-year high school student. She belonged to the tennis club and had many friends. Most of her friends had their own goals and dreams, but Yume didn't have any plans about her future. She didn't know what she wanted to do in her future.

One day, Yume's aunt, Miyako broke her arm. It would take about two months for her arm to get better. Miyako's husband was abroad on business at the time, so Miyako was living alone. "Don't worry," Miyako said over the phone. But Yume's mother was worried about her sister. "It must be hard to do everything by yourself," she said. When Yume heard their conversation, she hit on an idea. "Mom, I'll help Aunt Miyako during my spring vacation," Yume said. Yume's mother and Miyako were pleased with Yume's idea.

Two days later, Yume visited her Aunt Miyako. Miyako welcomed Yume with a big smile. Miyako's arm was in a *cast. She couldn't move her arm, but she could do most things if she did them slowly and carefully. Yume felt *relieved. "What do you want to eat for dinner?" she asked. "Well, I want to eat your curry. Your mother says your curry is delicious," said Miyako. Yume was happy to hear this and said, "I use various spices for my curry, but to make it special, I add tomato juice to it." Her aunt replied, "That sounds nice." Yume and Miyako really enjoyed eating the curry that evening.

After dinner, Miyako showed some pictures to Yume. They were the pictures painted by Miyako. "Your paintings are wonderful," said Yume. "Thank you. I like to paint pictures every day, but I can't now. I wish I could. But you can use my sketchbook, Yume, if you want." Then Miyako gave Yume her sketchbook.

The next day, Yume started to paint a *landscape of Miyako's garden in the sketchbook. There were many beautiful flowers in the garden. Yume wanted to paint the landscape beautifully, but she couldn't paint it as she wanted. "I can't do it anymore," Yume stopped painting. Then she *flipped through the sketchbook and found a beautiful picture. In the picture, many kinds of *plum blossoms were *in full bloom. "How beautiful it is! It's a plum park near here. I have been there once when I was little," she said to herself. The park was famous for its plum blossoms. So, at that moment, Yume decided to visit the beautiful park again.

When Yume arrived at the plum park, she was shocked at what she saw. Most of the plum trees were gone, and only a few flowers on the trees were blooming. Yume couldn't believe her eyes. "What happened to the park?!" Yume went to the park office to find someone who knew the reason. Mr. Taniguchi, one of the park managers, told her, "Ten years ago, one of the plum trees *was infected with a *virus. The virus was very strong. The plum trees became sick one after another. We couldn't find a way to *cure them, so we had to cut the infected trees down. After cutting down the sick trees, we started to plant plum *saplings here." "I didn't know that!" Yume shouted. "How long will it take for the saplings to grow and bloom?" she asked. "Well, they will take thirty years or more to grow and bloom *fully," he answered. Yume couldn't say anything. "I know how you feel," Mr. Taniguchi said. "Actually, the plum trees need a lot of time to grow. Most of the trees are still small, but they are growing little by little. If I look after them *properly, they will grow strong and bloom beautifully in

the future. I am seventy now, so I probably won't be able to see the park as beautiful as it was again. But it's ok. I am very happy now because I can do something meaningful for the future." He smiled at Yume.

That night, Yume talked with Miyako about the park. "I used to paint various landscapes of the park," Miyako said. "Like this?" Yume asked as she turned a page of the sketchbook and pointed to a picture. "Yes. I painted this picture about ten years ago," Miyako said as she looked at the picture sadly. "If the plum trees can grow tall and strong, they will bloom beautifully. The park will be filled with colorful blossoms. I think many people want to see the park as beautiful as it was again." Yume listened quietly to her aunt. "What can I do?" Yume thought to herself.

Yume visited the park many times while she was helping her aunt. She talked with Mr. Taniguchi a lot. He carefully showed Yume how to plant plum saplings. He also taught her how to take care of them properly.

Two weeks passed by quickly. Miyako could move her arm again well and it was time for Yume to go home. "Thank you for helping me. I had a good time with you," Miyako said to Yume. "Aunt Miyako, I have a dream," she said. "I want to be one of the people who takes care of the plum trees in the park. I want to bring the beauty of the park back again. I will study about flowers and plants at university. I won't let the plums get sick again. I'll do everything I can do for the park," Yume said. Miyako smiled at Yume. "I'm very proud of you." Yume and Miyako hugged each other.

[注] cast	ギブス	relieved	ほっとした	landscape	風景
flip through	ばらばらとめくる	plum blossom	梅の花	in full bloom	満開で
be infected with	～に感染する	virus	ウイルス	cure	～(の病気)を治す
sapling	苗木	fully	十分に	properly	立派に、適切に

[問1] I wish I could. の内容を次のように書き表すとすれば、の中に下のどれを入れるのがよいか。

Miyako wanted to .

- ア add tomato juice to her curry
- イ learn to paint the landscape of her garden
- ウ give Yume her sketchbook
- エ paint some pictures as usual

[問2] 次のア～エの文を、本文の内容の流れに沿って並べ、記号で答えよ。

- ア Yume tried to paint the landscape of Miyako's garden.
- イ Yume was taught how to look after the plum trees.
- ウ Yume talked with Miyako about her dream.
- エ Yume learned what happened to the plum park.

[問3] 次の(1)～(4)の文を、本文の内容と合うように完成するには、の中に、それぞれ下のどれを入れるのがよいか。

(1) Before Yume visited her aunt, she .

- ア wanted to go abroad to meet her uncle
- イ belonged to the tennis club to become a tennis player
- ウ didn't know what she wanted to do in the future
- エ wanted to learn about flowers and plants at university

(2) After flipping through the sketchbook, Yume went to the plum park because .

- ア she wanted to see the beauty of the park again
- イ she was too tired to help her aunt
- ウ it was the first time to go there
- エ she wanted to buy some spices for the curry

(3) When Yume knew the history of the park, she .

- ア was satisfied because Mr. Taniguchi found a way to cure the sick plum trees
- イ was surprised because plum trees took a long time to grow and bloom
- ウ was happy because various plum trees were still blooming in the park
- エ was disappointed because the virus could make plum trees stronger

(4) Miyako was proud of Yume because she thought .

- ア Yume was kind enough to help Mr. Taniguchi clean the plum park
- イ Yume was interested in plum trees and started reading books about them
- ウ Yume studied so hard that she could find a way to cure sick plum trees
- エ Yume had her own goals and decided to study hard for them

[問4] 次の(1)～(3)の質問の答えとして適切なものは、それぞれ下のうちではどれか。

(1) Why couldn't Yume believe her eyes when she went to the plum park?

- ア Because the plum park was much more beautiful than before.
- イ Because Mr. Taniguchi looked after plum trees as often as Miyako did.
- ウ Because Mr. Taniguchi was cutting plum trees down.
- エ Because the plum park was different from the past.

(2) Why did Yume visit the park many times?

- ア Because she tried to find what she could do for the park.
- イ Because she had to finish painting the landscape of the park.
- ウ Because she didn't want to stay with Miyako.
- エ Because she planted some plum saplings instead of Mr. Taniguchi.

(3) According to the story, which is true about Mr. Taniguchi?

- ア Mr. Taniguchi planted plum saplings when he was little.
- イ Mr. Taniguchi was sad because he was too old to see the beautiful park again.
- ウ Mr. Taniguchi was satisfied with his job.
- エ Mr. Taniguchi wanted everyone to look after plum trees in the park.